

Metal Die Moulding,  
RTM, S-RIM

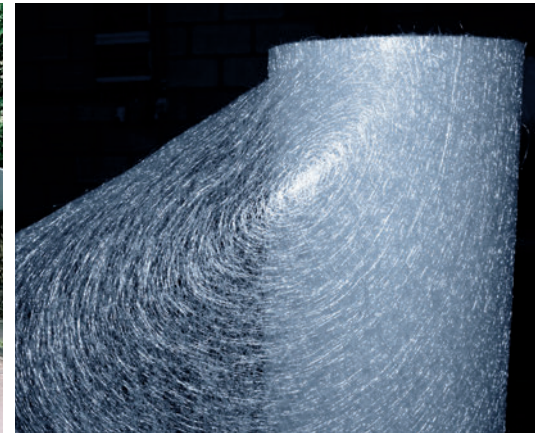
PU, VE, UP, EP

## Advantex® glass

Advantex® glass is a boron-free glass and presents significantly improved corrosion resistance across a wide range of aggressive environments. Advantex® glass is an E-CR glass in accordance with ASTM D578 and ISO 2078. This translates into important benefits for end-users over traditional E glass: longer service life, larger safety coefficients for the same design, and material savings. Traditional E-glass includes boron and often contains added fluorides. By using new manufacturing technology to eliminate these components from the glass composition, Advantex® glass has become a benchmark for integrated pollution prevention and the highest energy efficiency – all in an optimized process. 3B measures its efforts and works continually to minimize its impact on the environment and to set new standards within the global fibreglass industry.

This is our commitment.

## M8630 CFM for Press moulding



### Product Description

3B Continuous Filament Mat (CFM) is a non-woven mat made out of ECR glass filaments, consisting of continuous fibres randomly oriented in multiple layers. The glass fibre is bonded with a silane coupling agent and the layers are held together with a suitable binder. The M8630 family products contain an insoluble binder compatible with a large range of thermoset matrices like both unfilled or filled unsaturated polyester, vinyl ester, epoxy and polyurethane

resin systems. The M8630 emulsion mat is ideally suited for matched metal die moulding, RTM and S-RIM processes for moulding flat, large and heavy panels or non complex parts. The excellent mechanical properties provided by 3B CFM combined with the good electrical properties of the resins make the moulded parts attractive for applications like electrical apparatus (high voltage), transportation industries and infrastructures equipments.

#### FEATURES

- Integrity and rigidity of the mat
- Porosity

#### BENEFITS

- Designed for large panel production
- Can be unrolled, cut and conveyed to the mould without losing mat integrity even with large parts
- Easy to tailor to shape design without causing wrinkles or leaving resin-rich radii, which may cause cracking
- Resist to relocation in the mould under pressure and resin flow (wash resistance)
- Little resistance to resin flow for an easy and fast wet-through, even with filled resin

# M8630

## CFM for Press moulding

### PRODUCT CHARACTERISTICS

Product name	Weight <sup>(1)</sup> g/m <sup>2</sup>	width <sup>(2)</sup> cm	Bundle density tex	Solid content %	Resin compatibility	Process
M8630	300	130-170	20	2,5	PU, VE, EP, UP	RTM, S-RIM
	450	130-170	20	2,5	PU, VE, EP, UP	RTM, S-RIM
	600	130-170	20	2,5	PU, VE, EP, UP	RTM, S-RIM

(1) other weights available upon request

(2) other widths available upon request

### PACKAGING

The 3B Continuous Filament Mat is wound on a hard carton tube with an inside hole of 102 mm and an external diameter of 110 mm. A PE stretch film is wrapped around the roll to protect the material during handling and to help the slicing. All 3B CFM rolls have 2 sides trimmed. The outside diameter of the roll is a standard of 55 cm.

- For mat widths up to 210 mm: 6 vertical rolls per pallet
  - For mat widths above 210 mm: 6 horizontal rolls per pallet
- For more details on the packaging, please refer to the CFM Packaging Datasheet.

### STORAGE

Storage in a cool and dry warehouse into the original packaging is formally recommended. More precisely ideal storage conditions are a temperature between 15°C and 35°C and a relative humidity comprised between 35% and 75%. If these conditions are maintained, the glass fibre product should not undergo significant changes when stored for extended periods of time. It is also strongly recommended to condition it in the workshop for at least 24 hours before use to prevent condensation. For an optimal processing we recommend to use the product in ambient conditions (20°C-23°C and a relative humidity of 60%-65%).



#### Customer Service office:

I. Vandammestraat 5-7 Bat B  
B-1560 Hoeilaart, Belgium  
phone +32 2 402 2000  
fax +32 2 402 2002  
General info: [3B.info@3b-fibreglass.com](mailto:3B.info@3b-fibreglass.com)

**Disclaimer of Liability** This data is offered solely as a guide in the selection of a reinforcement. The information contained in this publication is based on actual laboratory data and/or field test experience. We believe this information to be reliable, but do not guarantee its applicability to the user's process or assume any liability arising out of its use or performance. The user, by accepting the products and/

or services described herein, agrees to be responsible for thoroughly testing any application to determine its suitability before committing to production. It is important for the user to determine the properties of its own commercial compounds when using this or any other reinforcement.

BECAUSE OF NUMEROUS FACTORS AFFECTING RESULTS, WE MAKE NO WARRANTY OF ANY KIND, EXPRESS OR IMPLIED, INCLUDING THOSE OF MERCHANTABILITY AND FITNESS FOR A PARTICULAR PURPOSE. STATEMENTS IN THIS DATA SHEET SHALL NOT BE CONSTRUED AS REPRESENTATIONS OR WARRANTIES OR AS INDUCEMENTS TO INFRINGE ANY PATENT OR VIOLATE ANY LAW, SAFETY CODE OR INSURANCE REGULATION.